



LABOR SITUATION

Office of Research

Danté Bartolomeo, Commissioner

FOR IMMEDIATE RELEASE

November 2022 Data

CT Unemployment Rate = 4.2%

US Unemployment Rate = 3.7%

Connecticut posts broad industry job gains (6,200) as jobless rate falls to 4.2%

WETHERSFIELD, December 15, 2022 – Connecticut’s nonfarm industry payrolls increased by 6,200 positions (0.4%) in November 2022 to 1,672,800, while the state’s unemployment rate dropped one-tenth of a percentage point to 4.2% (preliminary data, both seasonally adjusted). Connecticut’s nonfarm industry employment is now 36,500 (2.2%) positions higher than the November 2021 level. The Provision State has now recovered 90.9% (263,200) of the 289,400 nonagricultural positions lost during the 2020 COVID lockdown period (1,409,600 low). The originally released small October 2022 job gain of 500 (0.03%) was revised down by 1,600 positions to a loss of 1,100 (-0.07%). Connecticut’s unemployment rate fell to 4.2% over the month from the 4.3% rate in October 2022 and is now lower by one percent from the 5.2% rate a year ago. The CT Labor Situation presents the latest labor statistics compiled from two surveys (place of work and household) administered by the U.S. Bureau of Labor Statistics (BLS) in cooperation with the states.

“November saw gains in a wide range of industries, a sign of a balanced recovery with the private sector now 93.2% recovered from the COVID shutdown,” said Patrick Flaherty, Director of the Office of Research at the Connecticut Department of Labor. “As we approach the end of the year, we know 2022 will be remembered as a year of solid job growth and a large drop in the number of unemployed.”

Connecticut’s private sector employment improved by 3,300 jobs (0.2%) in November 2022 to 1,444,200 and is now up by 33,600 positions (2.4%) from the November 2021 level. The state’s private sector is 93.2% recovered from the April 2020 employment trough. The **government supersector** was also higher last month, adding 2,900 jobs (1.3%) to a level of 228,600. Total government employment in the state is 2,900 positions (1.3%) above the year-ago levels as the public sector is only 65.7% recovered from the COVID April 2020 bottom. Local government increased by 3,100 (2.2%). Some of the increase was due to temporary poll workers as a later election day (November 8th) occurred during the normal survey week this year. The last time this happened was in 2016. The government *supersector* in Connecticut includes all federal, state, local, and tribal government employment, including public education and Native American casino employment located on reservations.

Eight of the ten major industry *supersectors* added employment, while two declined in November 2022.

The eight Connecticut industry *supersectors* that increased employment in November 2022 (below)

Increasing Sectors			
Industry Sector	Amount of Increase	Percent OTM Change	November 2022 Employment
Government	+2,900	1.3%	228,600
Professional & Business Services	+2,300	1.1%	220,500
Construction & Mining	+500	0.8%	64,200
Education & Health Services	+500	0.1%	341,800
Leisure & Hospitality	+300	0.2%	150,400
Information	+200	0.6%	31,200
Other Services	+200	0.3%	60,500
Manufacturing	+100	0.1%	161,000

The two industry *supersectors* that declined in positions in November 2022 (below)

Decreasing Sectors			
Industry Sector	Amount of Decrease	Percent OTM Change	November 2022 Employment
Trade, Transportation, & Utilities	-600	-0.2%	297,500
Financial Activities	-200	-0.2%	117,100

Connecticut Labor Market Areas (LMAs): Five of the six major Connecticut **LMAs** that are seasonally adjusted by the BLS exhibited nonfarm employment gains in November 2022, while the **Waterbury LMA** (66,000) was unchanged. The **New Haven LMA** (0.4%, 299,100) led in numerical job gains (+1,200) as well as monthly percentage gains. The **Hartford LMA** (0.2%, 573,600) added 900 jobs while the **Bridgeport-Stamford-Norwalk LMA** (0.2%, 399,200) increased 600 positions. The **Norwich-New London-Westerly LMA** (0.3%, 121,700) also increased 400 payrolls and the **Danbury LMA** (0.1%, 76,700) chipped in 100 new jobs.

Note: The six major Connecticut LMAs are independently estimated from the statewide data by the BLS and cover around 90% of the nonfarm employment in the state. Thus, estimates will not exactly sum to the statewide total.

Hours and Earnings: The November 2022 **private sector** workweek, not seasonally adjusted, averaging 33.8 hours, is lower by three-tenths of an hour (-0.9%, Veteran's Day impacted) from the November 2021 estimate (34.1). Average hourly earnings at \$35.03 last month, not seasonally adjusted, were up by \$0.92 (2.7%) from the November 2021 estimate of \$34.11. The subsequent November 2022 private sector weekly wage averaged \$1,184.01, higher by \$20.86 from a year ago (1.8%, \$1,163.15). The Consumer Price Index for All Urban Consumers (CPI-U, U.S. City Average, not seasonally adjusted) in November 2022 was up 7.1% from a year ago. *Current all-employee private sector hours and earnings estimates can be volatile due to fluctuating sample responses.*

Labor Force Data (residential household survey)

The November 2022 unemployment rate for Connecticut was calculated by the BLS Local Area Unemployment Statistics program (LAUS) to be **4.2%** (seasonally adjusted). This is down by one-tenth of a percentage point from the October 2022 level of 4.3%. The Connecticut unemployment rate was 5.2% in November 2021. The statewide jobless rate was 3.4% in February 2020 before the COVID lockdown. The U.S. unemployment rate for November 2022 was 3.7%, unchanged from October 2022 but lower than the November 2021 jobless rate of 4.2%.

Unemployment claims for first-time filers (seasonally adjusted) in Connecticut were an average of 3,500 per week in November 2022, up by 41 (1.2%) from the October 2022 (3,459) level and higher by 124 (3.7%) than the average weekly count of 3,376 in November 2021.

*The nonfarm employment estimate, derived from a survey of businesses, is a measure of jobs in the state; the unemployment rate and labor force estimates are based on a household survey, and measure the work status of people who live in Connecticut. Overall, as the national and state economies recover, volatility in monthly numbers can be expected. **Job and employment estimates are best understood in the context of their movement over several months rather than observed changes in a single month's value.***

*Next Connecticut Labor Situation release: Monday, January 23, 2023
(Preliminary December 2022 data)*

Contact:
Communications, CT Department of Labor
CTDOL.SocialMedia@ct.gov

Labor Market Information is available at: www.ctworkforce.info
200 Folly Brook Boulevard, Wethersfield, CT 06109-1114 www.ct.gov/dol
An Equal Opportunity/Affirmative Action Employer

NONFARM EMPLOYMENT

Jobs - by Place of Work

CONNECTICUT AND THE UNITED STATES - Seasonally Adjusted

	November 2022 P	October 2022 R	September 2022	August 2022	November 2021	Over Month Change	Over Month Rate	Over Year Change	Over Year Rate
CONNECTICUT	1,672,800	1,666,600	1,667,700	1,663,400	1,636,300	6,200	0.4%	36,500	2.2%
Total Private	1,444,200	1,440,900	1,440,900	1,437,800	1,410,600	3,300	0.2%	33,600	2.4%
Goods Producing Industries									
Mining	500	500	500	500	500	0	0.0%	0	0.0%
Construction	63,700	63,200	62,800	61,700	61,700	500	0.8%	2,000	3.2%
Manufacturing	161,000	160,900	160,300	160,500	155,600	100	0.1%	5,400	3.5%
Durable Goods	124,800	124,900	124,300	124,600	121,500	-100	-0.1%	3,300	2.7%
Nondurable Goods	36,200	36,000	36,000	35,900	34,100	200	0.6%	2,100	6.2%
Service Providing Industries									
Trade, Transportation & Utilities	297,500	298,100	299,600	298,500	290,700	-600	-0.2%	6,800	2.3%
Wholesale	61,100	60,300	61,200	60,900	58,200	800	1.3%	2,900	5.0%
Retail	166,900	168,100	168,700	169,200	165,100	-1,200	-0.7%	1,800	1.1%
Transp, Warehousing & Utilities	69,500	69,700	69,700	68,400	67,400	-200	-0.3%	2,100	3.1%
Information	31,200	31,000	30,800	30,300	30,200	200	0.6%	1,000	3.3%
Financial Activities	117,100	117,300	117,700	118,400	116,700	-200	-0.2%	400	0.3%
Finance & Insurance	97,700	97,800	98,200	98,900	97,800	-100	-0.1%	-100	-0.1%
Real Estate, Rental & Leasing	19,400	19,500	19,500	19,500	18,900	-100	-0.5%	500	2.6%
Professional & Business Services	220,500	218,200	219,400	220,000	217,100	2,300	1.1%	3,400	1.6%
Prof, Scientific & Tech Services	100,200	99,400	98,600	98,900	98,100	800	0.8%	2,100	2.1%
Management of Companies	30,600	30,600	30,800	30,900	30,300	0	0.0%	300	1.0%
Admn & Support & Waste Mgt Serv	89,700	88,200	90,000	90,200	88,700	1,500	1.7%	1,000	1.1%
Educational & Health Services	341,800	341,300	340,100	339,200	336,100	500	0.1%	5,700	1.7%
Educational Services	68,400	68,600	68,600	69,200	66,000	-200	-0.3%	2,400	3.6%
Health Care & Social Assistance	273,400	272,700	271,500	270,000	270,100	700	0.3%	3,300	1.2%
Leisure and Hospitality	150,400	150,100	149,100	148,400	141,800	300	0.2%	8,600	6.1%
Arts, Entertainment & Recreation	25,700	25,600	25,600	24,500	24,200	100	0.4%	1,500	6.2%
Accommodation & Food Services	124,700	124,500	123,500	123,900	117,600	200	0.2%	7,100	6.0%
Other Services	60,500	60,300	60,600	60,300	60,200	200	0.3%	300	0.5%
Government**	228,600	225,700	226,800	225,600	225,700	2,900	1.3%	2,900	1.3%
UNITED STATES	153,548,000	153,285,000	153,001,000	152,732,000	148,652,000	263,000	0.2%	4,896,000	3.3%

LABOR MARKET AREAS (LMA)

Labor Market Area employment estimates are made independently of Statewide estimates.

Seasonally Adjusted data	November 2022 P	October 2022 R	September 2022	August 2022	November 2021	Over Month Change	Over Month Rate	Over Year Change	Over Year Rate
Bridgeport-Stamford-Norwalk	399,200	398,600	397,300	399,200	391,300	600	0.2%	7,900	2.0%
Danbury	76,700	76,600	76,200	76,000	74,700	100	0.1%	2,000	2.7%
Hartford	573,600	572,700	570,700	570,200	564,600	900	0.2%	9,000	1.6%
New Haven	299,100	297,900	296,100	294,000	292,200	1,200	0.4%	6,900	2.4%
Norwich-New London-Westerly, RI	121,700	121,300	121,500	120,900	118,900	400	0.3%	2,800	2.4%
Waterbury	66,000	66,000	65,800	66,200	65,400	0	0.0%	600	0.9%
Not Seasonally Adjusted data (Non-Classified Areas, State estimated - not BLS)									
Enfield	43,000	42,500	42,200	42,200	42,200	500	1.2%	800	1.9%
Torrington-Northwest	33,000	33,300	33,200	33,000	31,800	-300	-0.9%	1,200	3.8%
Danielson-Northeast	27,100	27,100	27,100	27,200	26,500	0	0.0%	600	2.3%

* Less than 0.05%

** Includes Native American tribal government employment

P = Preliminary

R = Revised

Starting with March, 2011, our monthly statewide and major LMA nonfarm job estimates have been taken over by the US Department of Labor Bureau of Labor Statistics. This is the final phase of transition in this program, which began in 2008. As a result of changes in the estimation procedures, you are likely to see more variability in month-to-month estimates of job counts. Caution should be used in interpreting any single month's estimate. The data are best interpreted to identify trends and cycles over several months and quarters. If you have any questions about these changes, please email us at: dol.lmi@ct.gov. Danbury and Waterbury LMA's are now back to being seasonally adjusted.

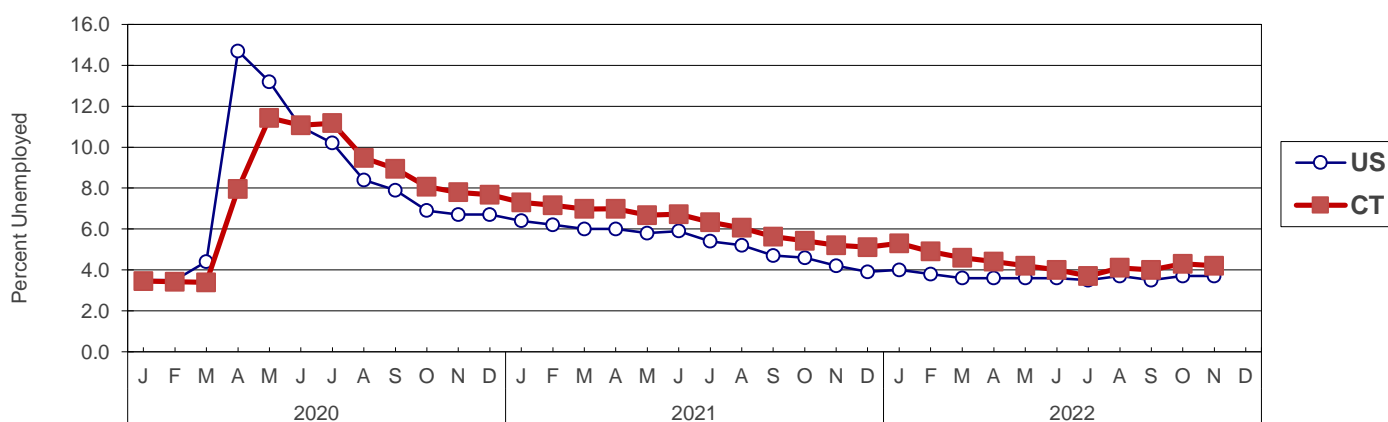
UNEMPLOYMENT

Persons Unemployed - by Place of Residence

CONNECTICUT AND THE UNITED STATES - Seasonally Adjusted

	Nov 2022 P		Nov 2021 R		Change		Oct 2022 R	
	Number	Rate	Number	Rate	Number	Points	Number	Rate
CONNECTICUT								
Unemployed	79,600	4.2	96,600	5.2	-17,000	-1.0	81,300	4.3
Labor Force	1,898,700		1,856,300		42,400		1,903,700	
UNITED STATES								
Unemployed	6,011,000	3.7	6,802,000	4.2	-791,000	-0.5	6,059,000	3.7
Labor Force	164,481,000		162,126,000		2,355,000		164,667,000	

U.S. AND CONNECTICUT UNEMPLOYMENT RATES - Seasonally Adjusted 2020 - 2022



LABOR MARKET AREAS - Not Seasonally Adjusted

	Nov 2022 P		Nov 2021 R		Change		Oct 2022 R	
	Number	Rate	Number	Rate	Number	Points	Number	Rate
Bridgeport-Stamford	16,800	3.6	20,200	4.4	-3,400	-0.8	19,200	4.1
Danbury	3,100	3.0	3,800	3.7	-700	-0.7	3,500	3.3
Danielson-Northeast*	1,500	3.4	1,800	4.1	-300	-0.7	1,600	3.7
Worcester NECTA	1,400	3.4	1,700	4.2	-300	-0.8	1,500	3.7
Hampton	100	2.8	100	3.4	0	-0.6	100	3.2
Enfield	1,600	3.2	2,000	3.9	-400	-0.7	1,800	3.6
Hartford	21,400	3.4	26,700	4.3	-5,300	-0.9	24,100	3.9
New Haven	11,100	3.3	13,600	4.1	-2,500	-0.8	12,600	3.7
Norwich-New London	5,000	3.7	6,500	4.8	-1,500	-1.1	5,800	4.2
Torrington-Northwest**	1,500	3.2	1,800	3.9	-300	-0.7	1,600	3.5
Torrington NECTA	1,000	3.7	1,200	4.7	-200	-1.0	1,100	4.2
Litchfield	500	2.5	600	3.0	-100	-0.5	600	2.6
Waterbury	4,800	4.3	5,800	5.3	-1,000	-1.0	5,600	5.1
CONNECTICUT	66,300	3.5	81,500	4.4	-15,200	-0.9	75,200	4.0
UNITED STATES	5,523,000	3.4	6,302,000	3.9	-779,000	-0.5	5,609,000	3.4

P = Preliminary

R = Revised

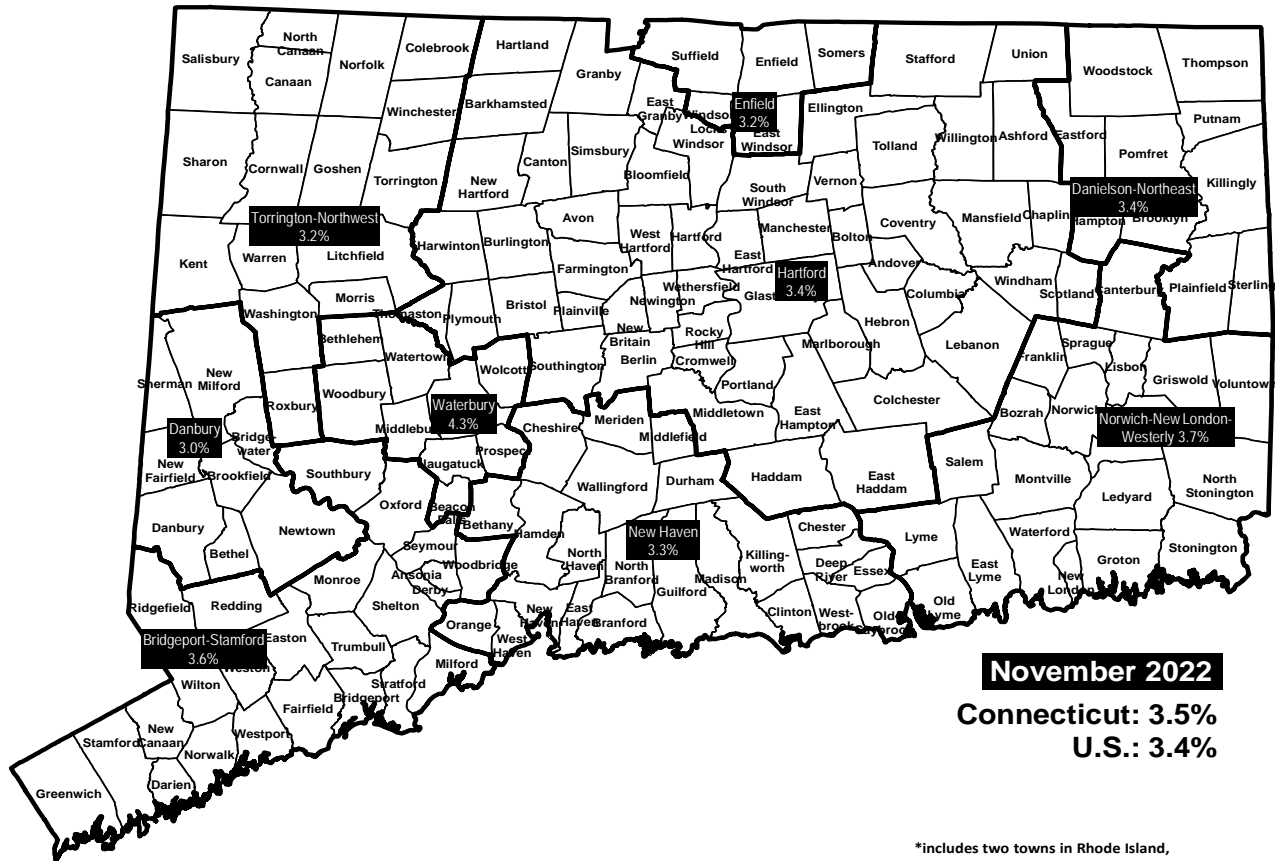
Labor force data included in this publication are developed in cooperation with the U.S. Department of Labor, Bureau of Labor Statistics.

* Worcester NECTA, CT part and Hampton LMA are combined ** Torrington Micropolitan NECTA and Litchfield LMA are combined

UNEMPLOYMENT RATES

Not Seasonally Adjusted

LABOR MARKET AREAS



HOURS AND EARNINGS

CONNECTICUT Statewide - Not Seasonally Adjusted

	Average Weekly Earnings				Average Weekly Hours				Average Hourly Earnings			
	Nov. 2022 P	Nov. 2021	Change over Yr.	Oct. 2022 R	Nov. 2022 P	Nov. 2021	Change over Yr.	Oct. 2022 R	Nov. 2022 P	Nov. 2021	Change over Yr.	Oct. 2022 R
Private Industry All Employees	\$1,184.01	\$1,163.15	\$20.86	\$1,203.05	33.8	34.1	-0.3	34.1	\$35.03	\$34.11	\$0.92	\$35.28
Manufacturing* Production Workers	\$1,174.37	\$1,124.48	\$49.89	\$1,156.90	41.6	39.4	2.2	41.2	\$28.32	\$28.54	-\$0.22	\$28.08

* Production worker data have been impacted by the loss of a large, high-paying manufacturer from the monthly sample.

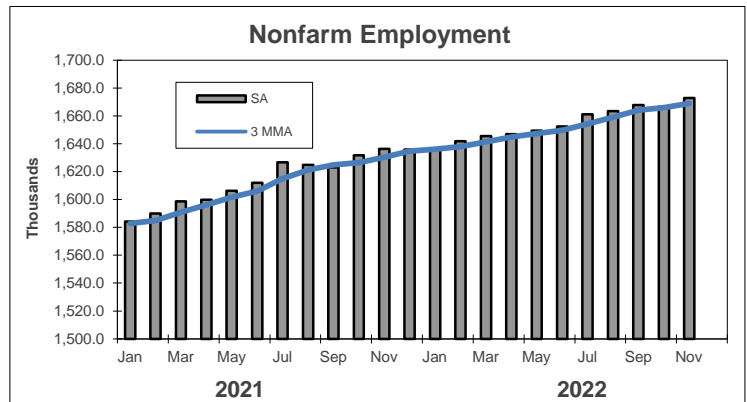
P = Preliminary R = Revised

Hours and earnings are also developed for the state's major industry sectors and Labor Market Areas. They can be found on our website at: www1.ctdol.state.ct.us/lmi

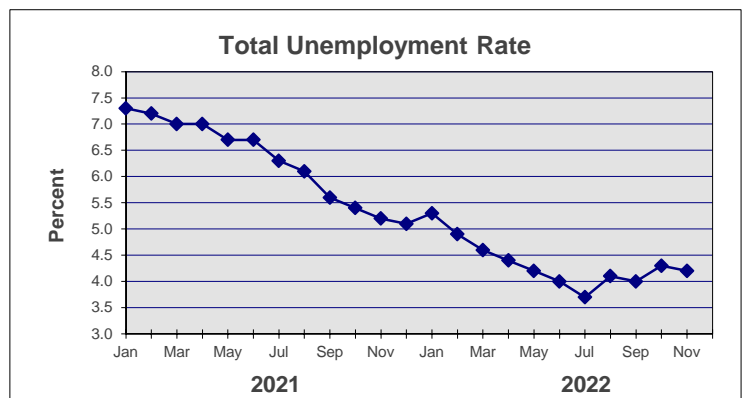
TRENDS

Seasonally Adjusted

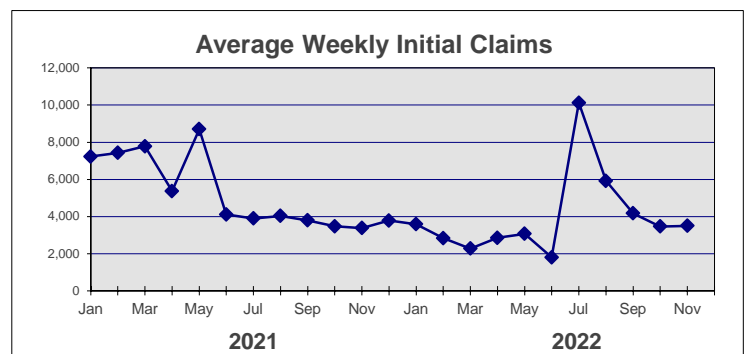
	Nonfarm Employment (000s)	Total Unemployment Rate
2021		
Jan	1,584.1	7.3
Feb	1,590.0	7.2
Mar	1,598.7	7.0
Apr	1,599.8	7.0
May	1,606.3	6.7
Jun	1,612.0	6.7
Jul	1,626.6	6.3
Aug	1,624.7	6.1
Sep	1,622.9	5.6
Oct	1,631.6	5.4
Nov	1,636.3	5.2
Dec	1,635.8	5.1



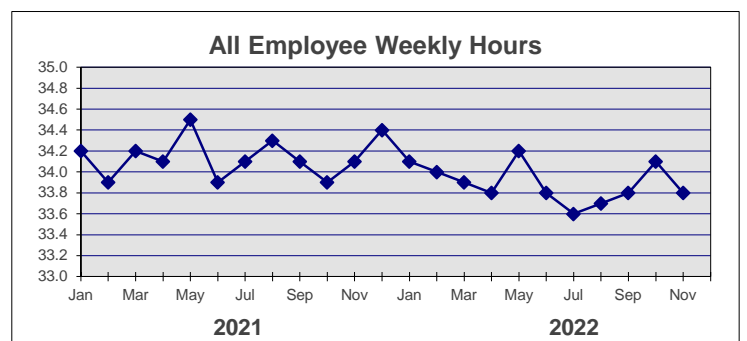
2022		
Jan	1,636.4	5.3
Feb	1,641.8	4.9
Mar	1,645.5	4.6
Apr	1,646.9	4.4
May	1,649.3	4.2
Jun	1,652.3	4.0
Jul	1,661.0	3.7
Aug	1,663.4	4.1
Sep	1,667.7	4.0
Oct	1,666.6 R	4.3 R
Nov	1,672.8 P	4.2 P
Dec		



	Avg Weekly Initial Claims	All Employee Weekly Hours*
2021		
Jan	7,226	34.2
Feb	7,431	33.9
Mar	7,780	34.2
Apr	5,366	34.1
May	8,702	34.5
Jun	4,109	33.9
Jul	3,892	34.1
Aug	4,031	34.3
Sep	3,789	34.1
Oct	3,472	33.9
Nov	3,376	34.1
Dec	3,780	34.4



2022		
Jan	3,585	34.1
Feb	2,837	34.0
Mar	2,275	33.9
Apr	2,848	33.8
May	3,066	34.2
Jun	1,800	33.8
Jul	10,124	33.6
Aug	5,915	33.7
Sep	4,170	33.8
Oct	3,459	34.1 R
Nov	3,500	33.8 P
Dec		



* Not seasonally adjusted

P = Preliminary

R = Revised

** Labor-management dispute